

# FIXI PIPELINE Product Portfolio





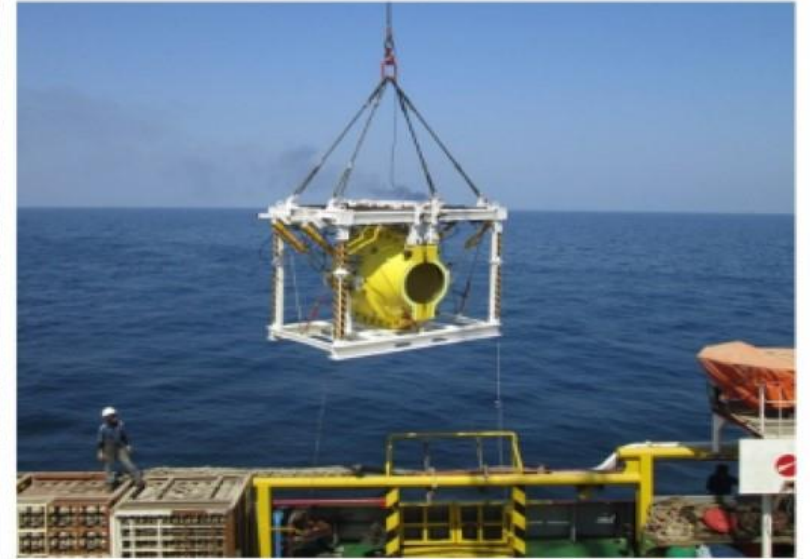
COMPANY PROFILE

## Fixpipeline Products and Services LTD

a Shidarian Kish brand

[www.fixpipeline.com](http://www.fixpipeline.com)





## What we do



- **DESIGN & FABRICATION**

Advanced high-pressure pipeline repair clamps and end-connectors, designed to specifications and following international standards

- **EPRS AND IMR SERVICES**

Strategy development, pipeline stress test and analysis, sealant injection, custom solutions, staff training, and much more

## 6 Rs of Fixpipeline

Our 6 use-case focuses with an example for each

Our focused approach to product development and deployment makes us one of the most specialized players in the pipelines services industry



### REPAIR

e.g. Damaged or leaking pipeline



### REMOVAL

e.g. Decommissioning a pipeline sub-section



### REPLACEMENT

e.g. Adding a removable pig launcher to a sub-section



### REMEDIAL

e.g. Prevention strategies for aging pipelines



### REINFORCEMENT

e.g. Shielding pipe walls against construction and falling objects



### RENOVATE

e.g. After-sale warranty for parts and routine overhaul

## Our legacy



- **3 INDUSTRIAL FACILITIES**

With an ever-growing capacity for heavy-duty production in record lead-times.

- **23 EXPORT DESTINATIONS**

Operators across the globe know and trust our technologies.

- **+3000 DELIVERED PROJECTS**

Our products have been under pressure for a combined millions of hours.

- **AGILE OPERATIONS**

Nimble engineering and production teams that move fast and can adapt to the way our clients work.

- **20+ YEARS OF SERVICE**

An unmatched and focused history of providing world-class EPRS and IMR solutions.

- **8 PATENTS**

For technologies ranging from diver aids to manufacturing innovations and new products.

## Awards and approvals

- TUV NORD ISO 9001:2015
- TOP 100 IRANIAN BRANDS
- DET NORSKE VERITAS
- NOBLE DENTON
- STATOIL
- SHELL
- TOTAL
- BP
- CONOCOPHILLIPS
- CNOOC
- PERTAMINA
- PETRONAS

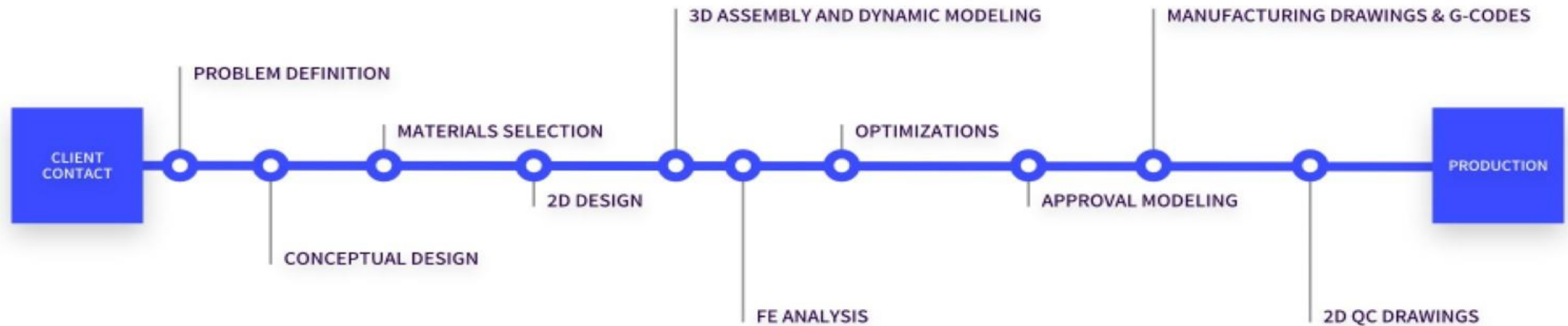


## Select clients





## Our process



Our systematic design approach takes into account every client need. This is because our operations are fully integrated under one roof, with R&D and production teams in maximum synergy.

## Product categories

### 1 CONSTRUCTIONAL CLAMPS

The Pipe-Fit series of clamps inherit the physics of the pipeline and become a permanent part of it with double-row sealing.

### 2 STRUCTURAL CLAMPS

The Super-Fit portfolio of clamps is designed to transfer load away from the pipeline structure and onto the clamp body.

### 3 CONSTRUCTIONAL CONNECTORS

The Pipe-Tight series aims to provide a fast and easy way to attach two pipe bare-ends for a variety of use-cases.

### 4 STRUCTURAL CONNECTORS

Super-Tight is designed to join two flanged or pipe bare-ends for easy cut-and-replace operations and other related projects.

### 5 PIPELINE SERVICES

Our services include but are not limited to: sealant injection, on-line plugging, pipe weakness analysis, testing, and more.

### 6 SPECIAL-PURPOSE PRODUCTS

Including but not limited to: diver-aid technologies, built-in accessories, clamps with dynamically adjustable length, specialized installation skid/saddle, and more.

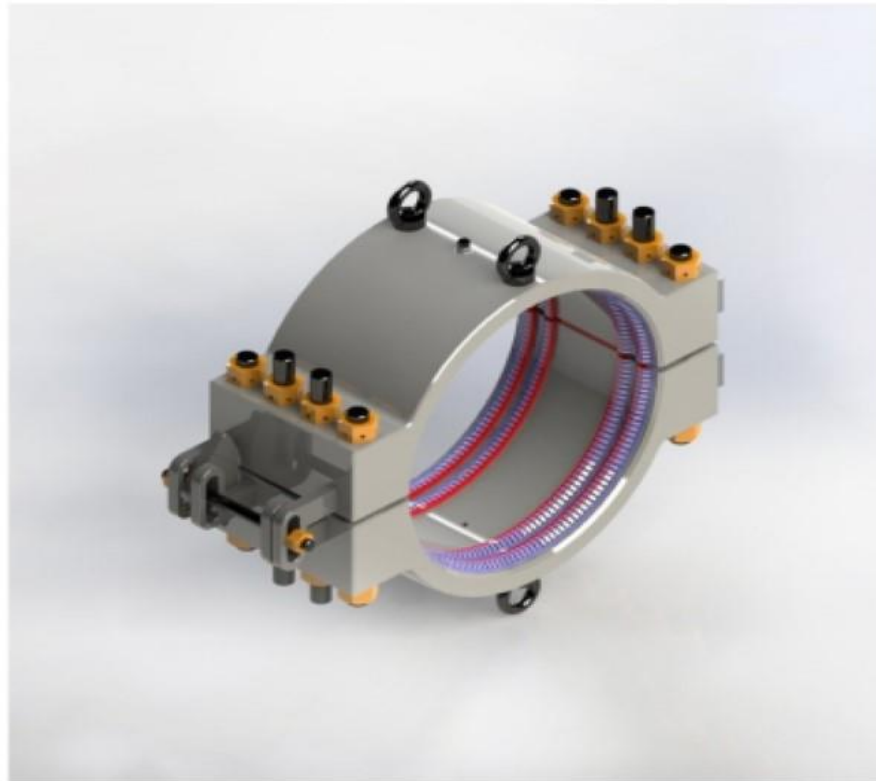
### 7 CUSTOM SOLUTIONS

Can't find the product you're looking for? On more than 25 projects, we have developed completely new products for our clients' special needs. On top of new designs, almost every project involves adjustments that turn a standard product into a fit-for-purpose solution.



## Pipe-Fit Series

Constructional clamps



- **WIDE-RANGING USE**

Sealing mechanism safe for sour gas and other corrosive materials on-shore and off-shore

- **EASY INSTALLATION**

Quick and easy installation using custom designed skid and saddle

- **FLEXIBLE DESIGN**

Ability to be fabricated in ultra-length to cover long or distributed leaks in single installation

- **INNOVATIVE FEATURES**

Advanced uniform activation mechanism, double-row sealing, etc.

## Pipe-Fit Products

Constructional clamps



**CUSTOM-FIT**

Custom designed for limitless shapes of pressure vessels to prevent leaks from any fitting or accessory on the pipeline, such as a valve, a pig signaler, and an old blind branch.



**NEEDLE CLAMP**

Provides quick response to a jet leak from pitting. With 2000 psi lightweight robust design to stop the leak in a matter of minutes.



**FLANGE-FIT**

A belt-on gap clamp with multiple injection ports to replace an old gasket with chemical-resistant compounds.



**TAP-FIT**

Allows weld-less branching of the line without shutting down the operation. Compatible with all standard tapping machines and flanges.



**BOX-FIT**

Whether the problem is a leaking flange joint or an old clamp, it can be surrounded and clamped in this reliably designed full enclosure.



**PIPE-FIT**

For online restoration of leaking or weakened spots by sequential bolting to activate sealing gaskets uniformly through stainless-steel protection sheets.

## Pipe-Fit Products

Constructional clamps



**BEND-FIT**

Stops leaks on cold and hot bends of various lengths. It can be designed in solid or modular forms.



**REDUCER-FIT**

The only leak repair clamp in existence for reducers. Returns the integrity to the joint for any dual-size line for oil, gas, or products.



**ELBOW-FIT**

Covers both 45° and 90° standard elbows. Fabrication would consider installation limitations such as neighboring line distance, right/left set, and operational concerns.



**WYE-FIT**

Addresses a Wye branch in a high pressure line with an easy-to-install jacket. It can be machined from a solid block or fabricated as per Wye standard diameters.



**TEE-FIT**

Directional fittings are more for dealing with abrasion- and erosion-based leaks. Tee repair clamps can be designed for standard or custom tee branches with various arm lengths.

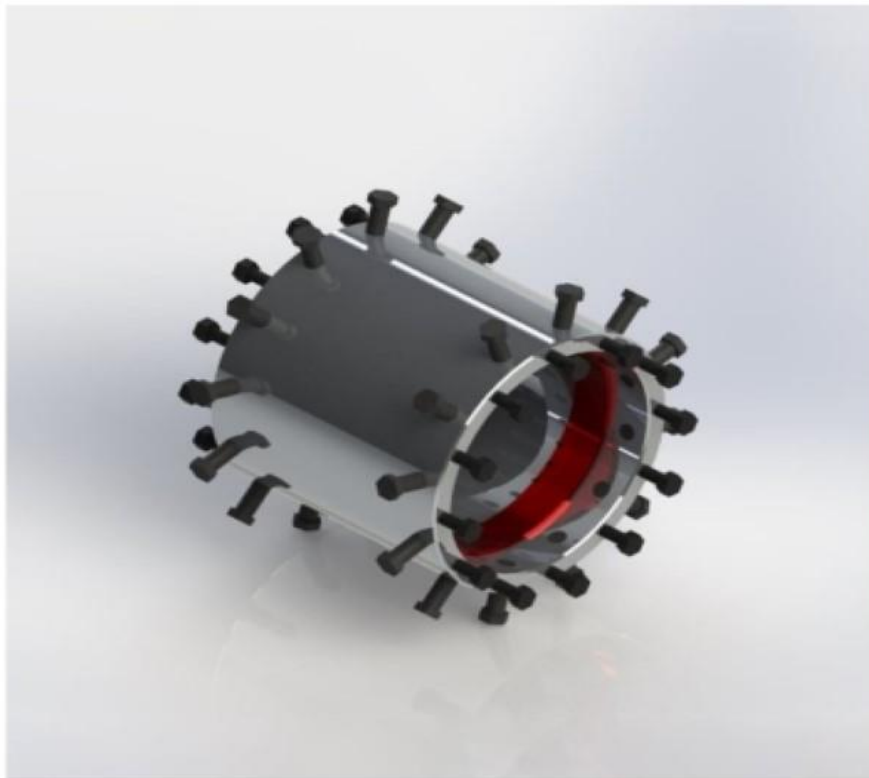


**POWER-FIT**

Compression gland sealing directly on leak spot makes Power-Fit a powerful solution to patch off the leak right on the spot.

## Pipe-Tight Series

Constructional connectors



- **WIDE-RANGING USE**

Used for repair, replacement, and reroute operations of on-shore, off-shore, and sour-service projects

- **FLEXIBLE DESIGN**

Extra gripping trust screws allow for ultra-length versions and custom solutions

- **EASY INSTALLATION**

Graceful activation and post-installation welding or clamping possibility

- **INNOVATIVE FEATURES**

One-side-flanged versions, lifting lugs, welding edges, back-up ring clamps, etc.

## Pipe-Tight Products

Constructional clamps



**ANCHOR-TIGHT**

Anchors the two ends to reinforce the joint to withstand larger axial and lateral forces at the connection. It can be used to compose a Fit or Tight assembly.



**REDUCER-TIGHT**

The one and only fitting that enables joint dual-size connections for temporary or permanent commutation.



**FLANGE-TIGHT**

Connects a flanged end to a pipe end in vertical and horizontal directions.



**RISER-TIGHT**

Without the need for welding, connects a pre-welded fitted line to a splash zone riser. It offers extra gripping spots to handle vertical connections.



**PIPE-TIGHT**

Connects two onshore pipe ends without a flange by centralizing and gripping the ends while sealing the connection.



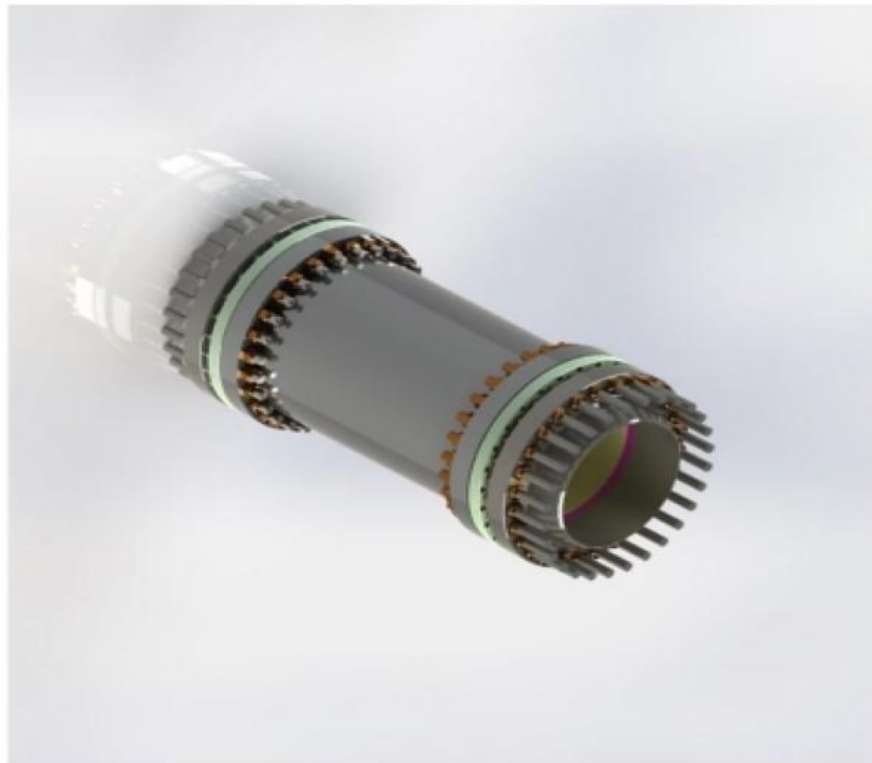
**POWER-TIGHT**

A flange integrity kit which enhances the joint mechanical capabilities against several environmental and operational risk factors



## Super-Tight Series

Structural connectors



- **WIDE-RANGING USE**

This piggable connector can attach two spool-ends for off-shore and sour-service pipelines

- **EASY INSTALLATION**

Low torque, few bolts, no hot-work permit needed, etc.

- **FLEXIBLE DESIGN**

Adjustable end gap to tolerate spool length, ovality tolerance, mechanical or hydraulic activation, misalignment tolerance, etc.

- **INNOVATIVE FEATURES**

Built-in accessories, diver-less installation possible, environmental seal, gripping force control, etc.

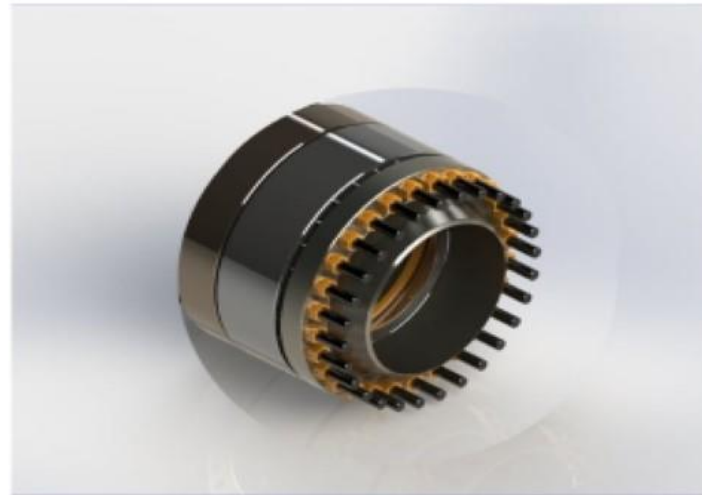
## Super-Tight Products

Structural connectors



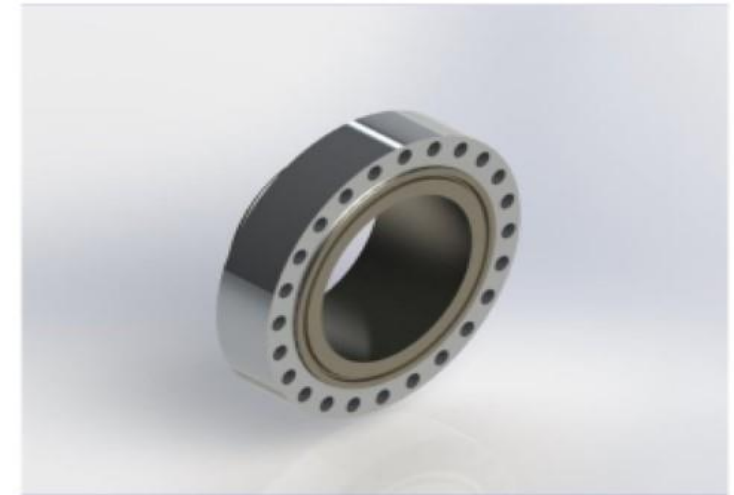
**SUPER-TIGHT COUPLING**

If there is no flanged spool or operational boundaries prevent using a weld or flange joint, then this double-sided seal-and-grip coupling can make the joint the strongest point on the line.



**SUPER-TIGHT MISALIGNMENT FLANGE**

Ball-and-socket flange joint to compensate for the angular misalignment of  $\pm 10^\circ$  to avoid extra force on sides of the bolting end connection.

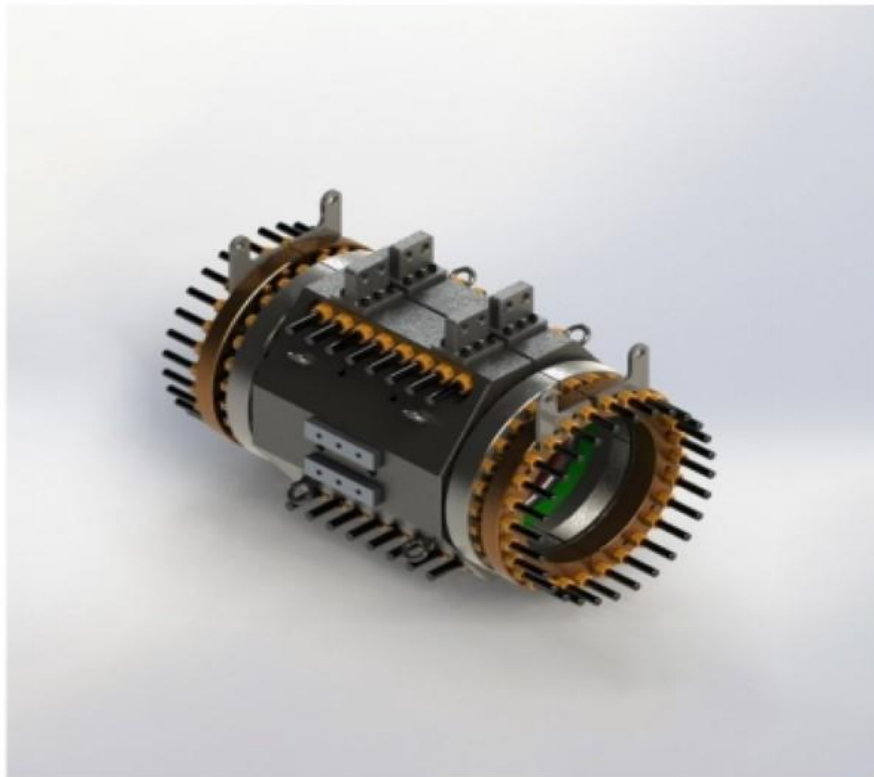


**SUPER-TIGHT SWIVEL FLANGE**

Machined of high-grade treated forged steel in a standard design to mate bolting patterns for easy flange assembly.

## Super-Fit Series

Structural clamps



- **WIDE-RANGING USE**

Sealing mechanism safe for sour gas, crude oil, and corrosive materials

- **EASY INSTALLATION**

Integrated sealing energization procedure leads to a easy uniform activation

- **FLEXIBLE DESIGN**

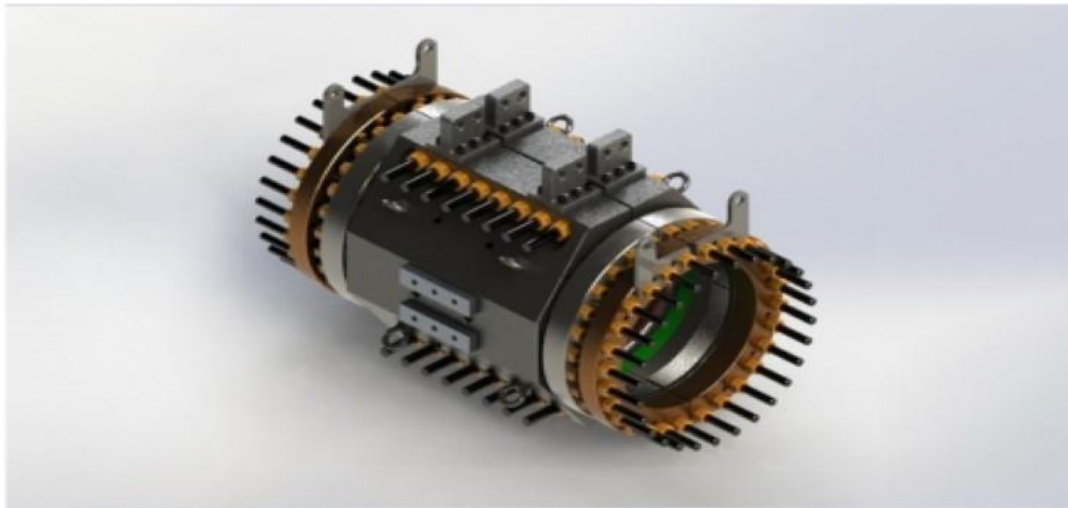
Integrated body assembly for robust handling and environmental performance

- **INNOVATIVE FEATURES**

Built-in accessories, diver-less installation possible, environmental seal, seal tests, etc.

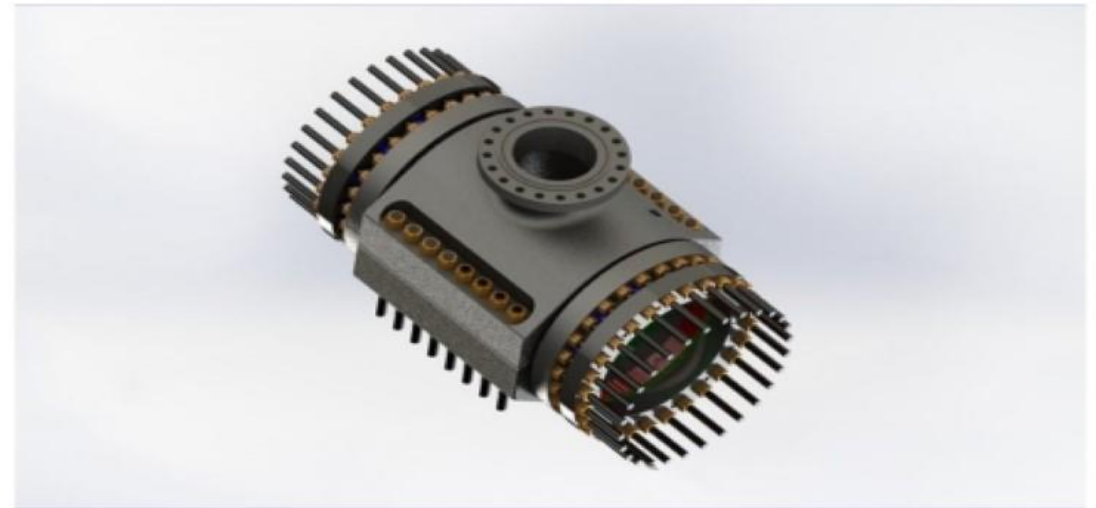
## Super-Fit Products

Structural clamps



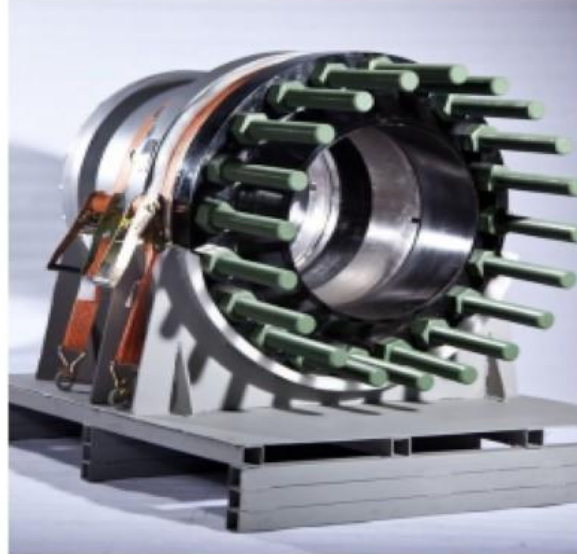
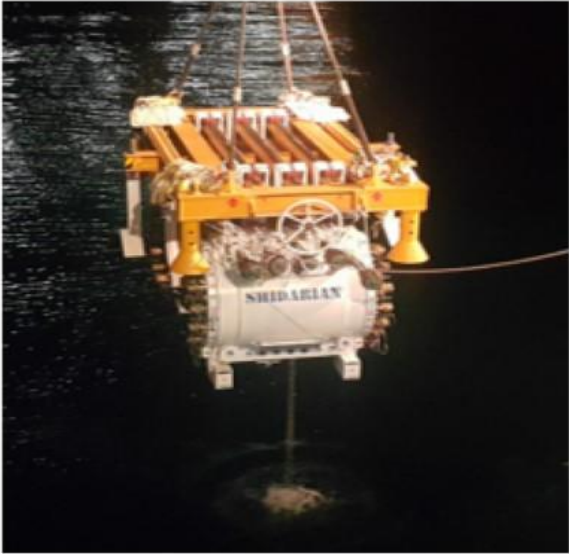
**SUPER-FIT**

The Super-Fit acts like a replacement of the leaking or weakened area, for cracks, dents, ruptures, and defective seam and girth weld, by transferring the load of the structure to the clamp body.



**SUPER-TEE**

Full structural tee provides stability to the line for re-engineering operations such as installing a valve, branching, sectioning the line, connecting it to a facility, or even removing a dent spot.



# Thank You

**We look forward to further discussions on our portfolio and to serve you in the near future.**

Warm regards

Murali Narasimhan (Managing Partner)

[info@coretechindustrial.in](mailto:info@coretechindustrial.in)

Contact : +91-9902783547

Coretech Industrial Solutions

#202A, Brigade MM Annex Block, K.R Road,

7<sup>th</sup> Block Jayangar, Bengaluru -560070

Website : [www.coretechindustrial.in](http://www.coretechindustrial.in)